

L
I
O
N
S

1980



R
O
A
R





*Do you know
where you're
going?*



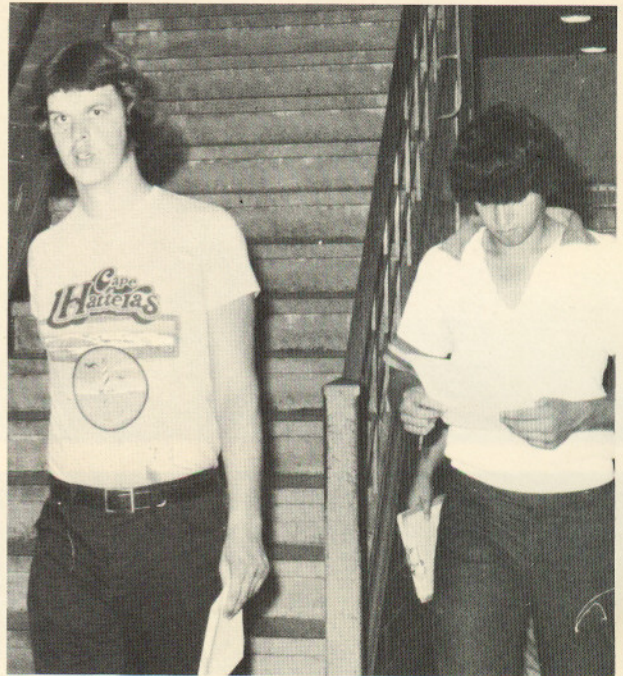
YOU ARE GOING

To Your Special Events	17
To Your Organizations	35
To Your Athletic Teams	49
To Your Special Classmates	75
To the Senior Class	109
To the Dedicated Faculty	135
To the 1980 Supportive Advertisers	145

Do you like the things
that life is showing you?



Where are you going;
do you know?

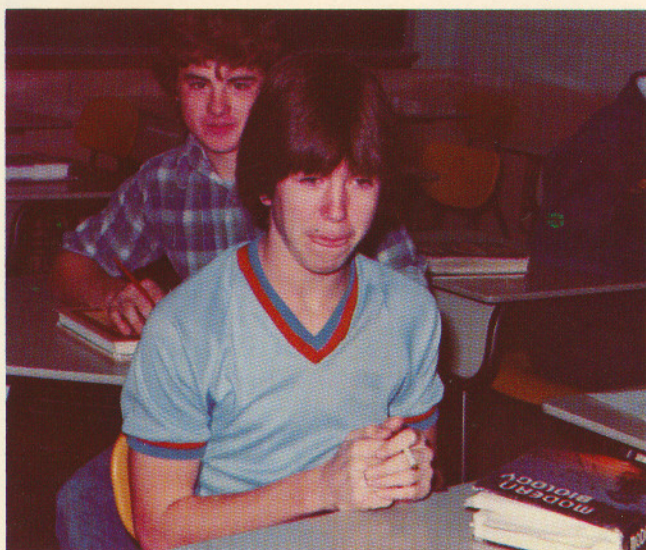


*Do you get what you're hoping for?
When you look behind you, there's no open door.*

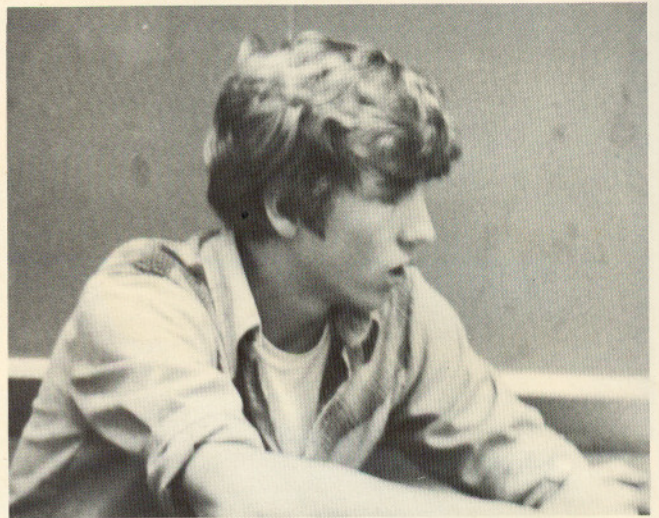


What are you hoping for?

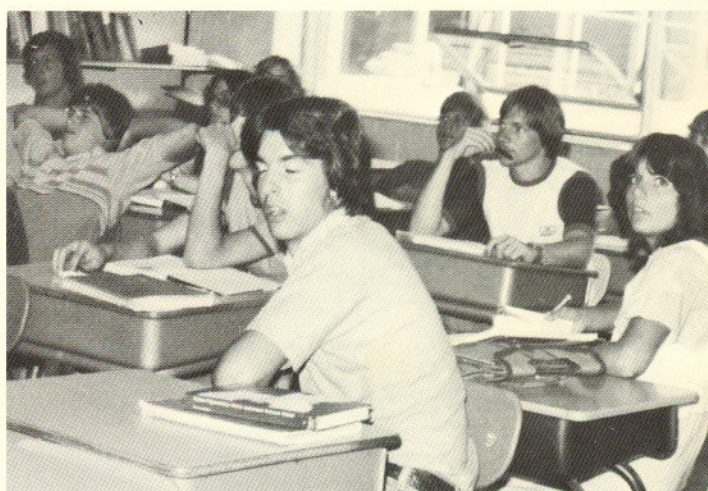
Do you know?



*Once we were standing still in time
Chasing the fantasies that filled our minds*



*My spirit was free, laughing
at the questions that you once asked me*

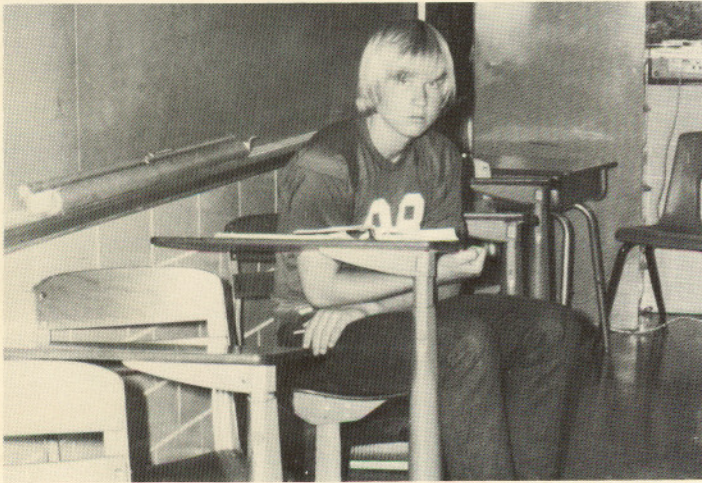
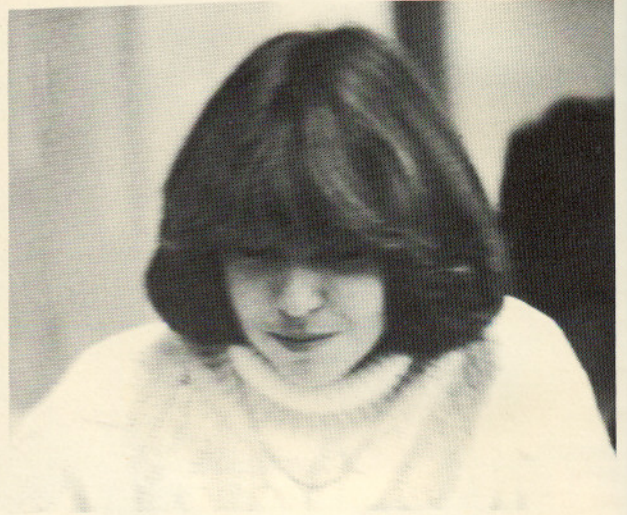




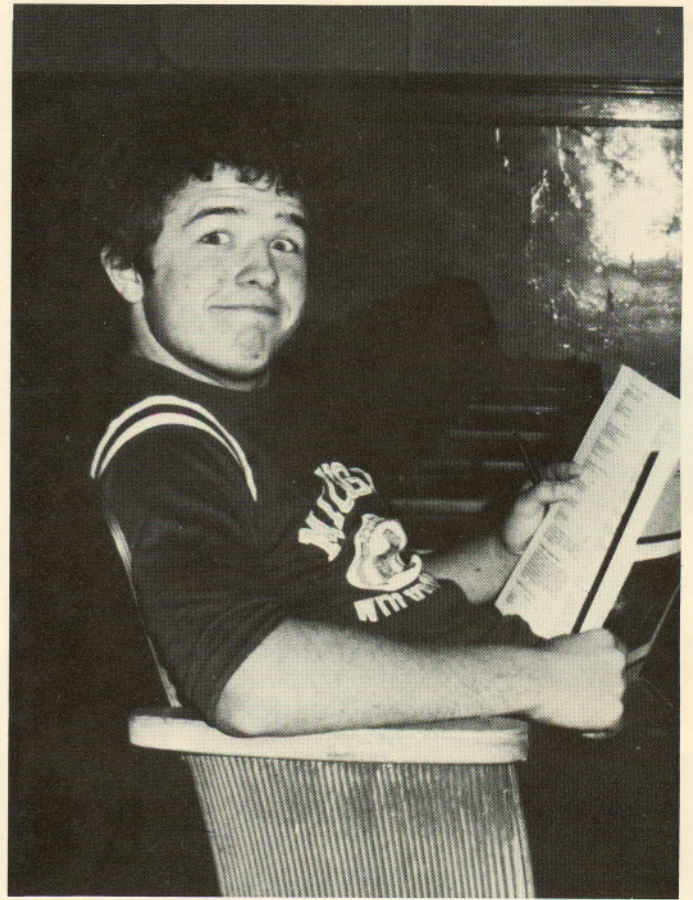
We let many dreams just slip through our hands



*Why must we wait so long
before we see*



*How sad the answers to the
questions might be.*





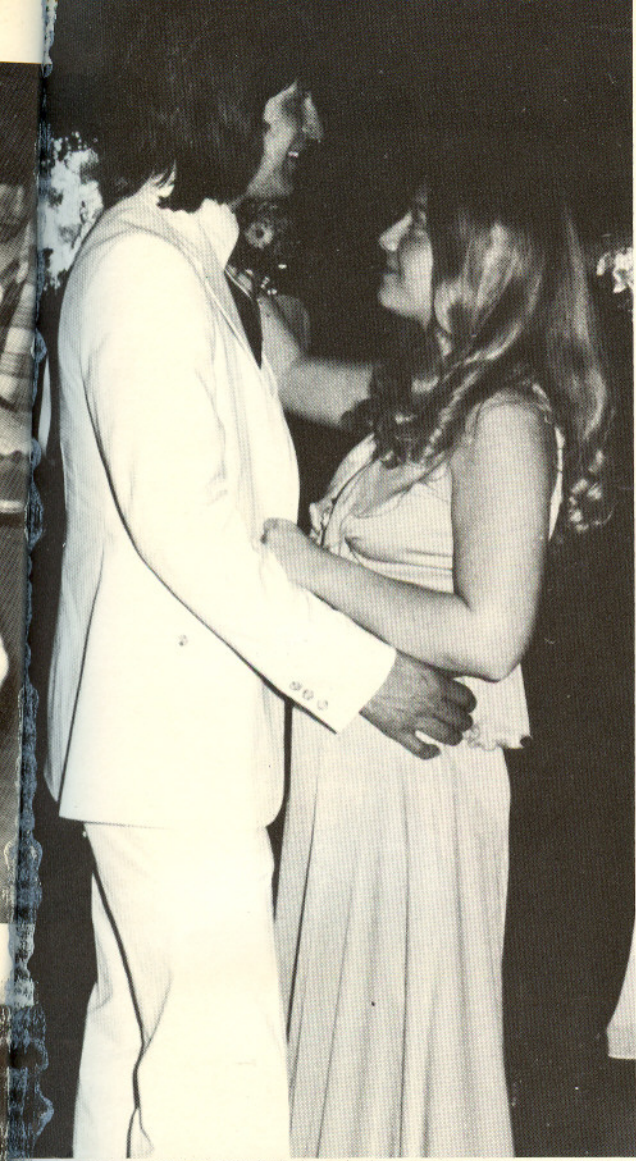


*Do you know
where you're going?*



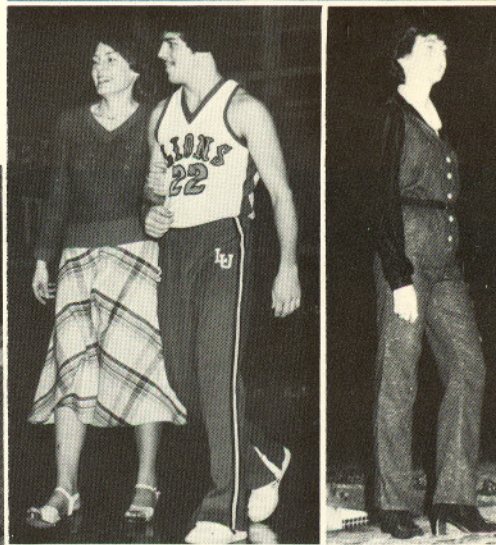
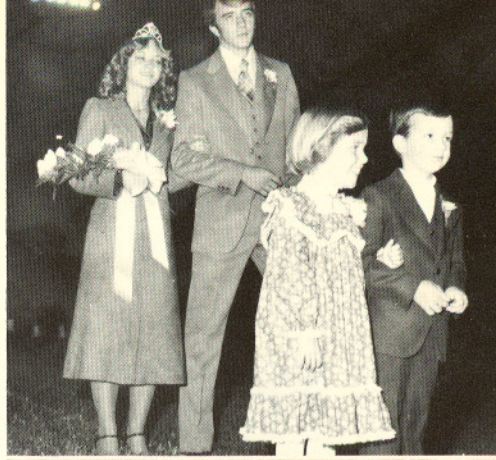
Do you know
the things that
life is showing
you?





S
P
E
C
I
A
L

A
C
T
I
V
I
T
I
E
S



Homecoming Court 1980



QUEEN — Brenda Klinck

KING — Gar Phillips

Senior Attendent



Sandy Bair David Price

Junior Attendent



Leslie Orr Dan Tener

Sophomore Attendent



Lori Siefert Tal Lohr

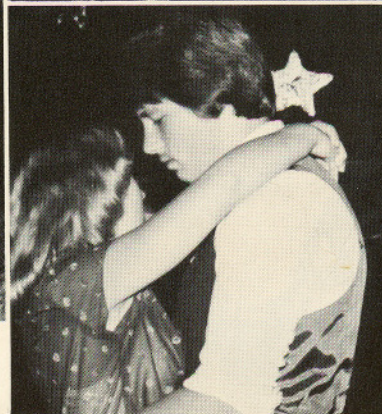
Freshman Attendent

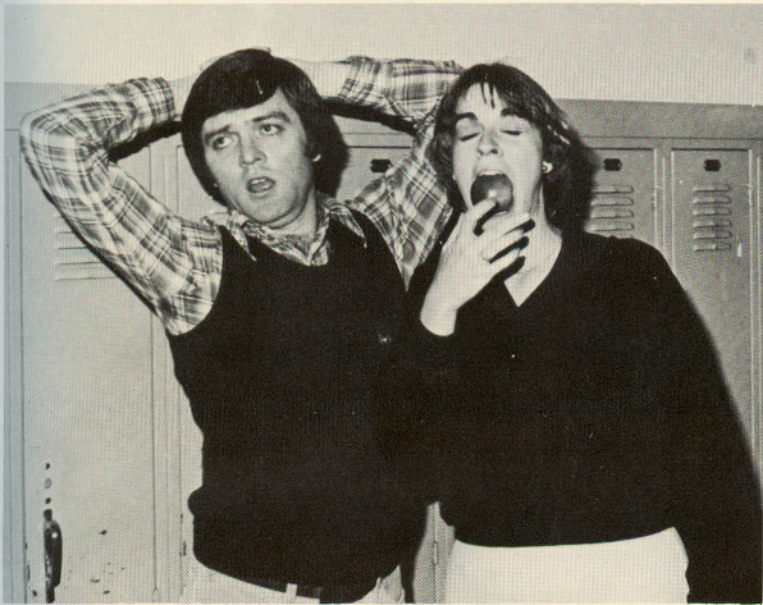


Cheryl Sorell Jon Underwood



Shannon Wagner Marty Smith





Basketball Homecoming



Lisa Schaffner
Jeff Hoshier

Becky Bachman
Gar Phillips

Lisa Mathias
Dave Weidner

Sandy Bair
John Thomas

Karyl Grube
John Gates

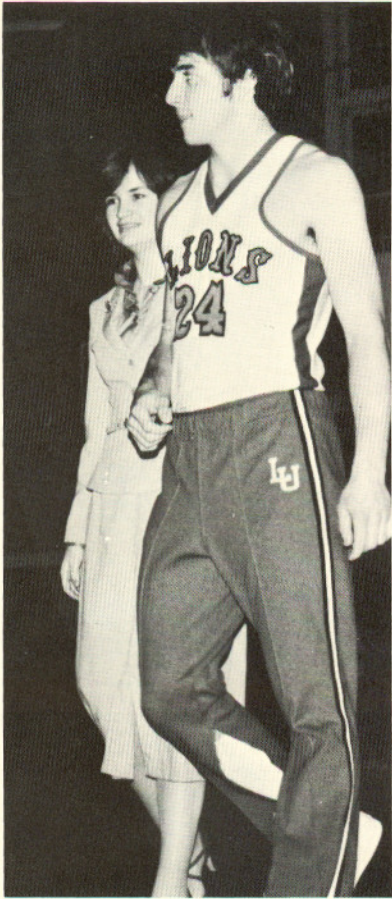
Suzy Couch
Steve Shell



Queen
Sandy
Bair

King
John
Thomas





Jeff and Sandy Crowned as Holly King and Queen



Queen Sandy Hughes King Jeff Hoshier

Senior Attendant



Suzy Couch Scott Carpenter

Junior Attendant



Sandy Barker Bob Alexander

Sophomore Attendant



Lori Ault Mike Manson

Freshman Attendant

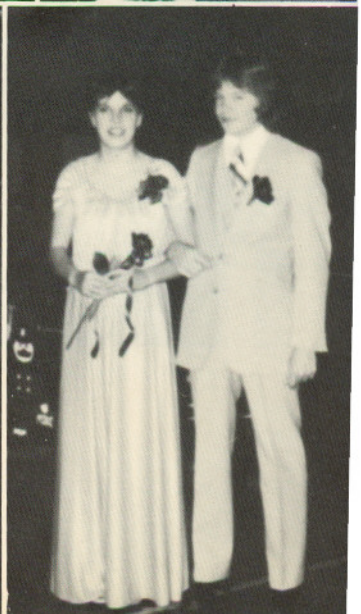


Lisa Upp John Underwood



Mark Manson

Jennifer McConaha



Once Upon a Mattress



Once upon a time in a kingdom far away minstrel Scot Ashton tells the musical story of the Princess and the Pea.

Wizard Pete Thomas tests Princess Linda Furlough on technical medieval trivia.



All the Court cries in song because a suitable Princess cannot be found for Prince Dauntless (Jeff Waters)

Eureka! Prince Dauntless meets Princess "Fred" (Trudie Tope). It's Love at first sight.

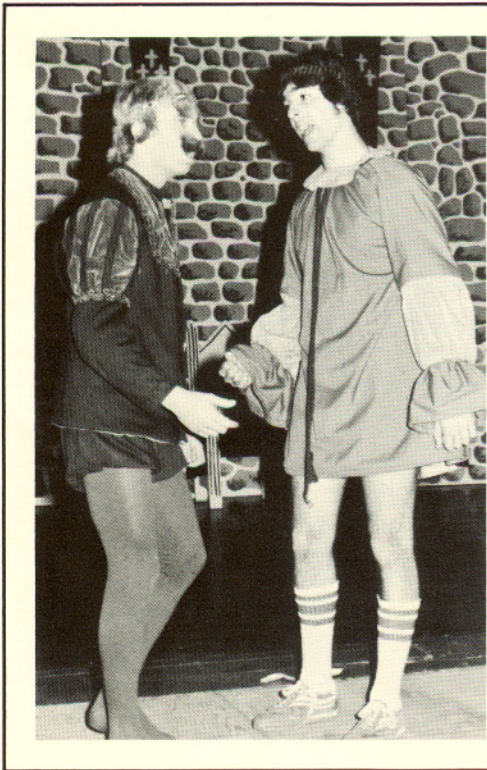




Quiet! The Queen insists on quiet!



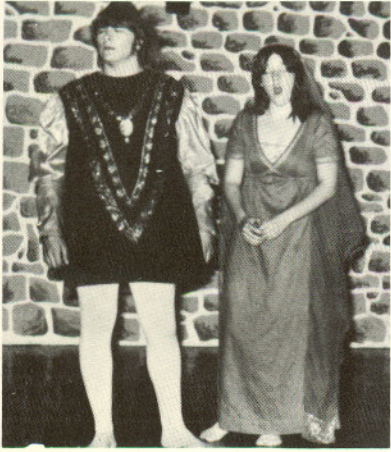
"History . . . That takes in alot. Lets give it a whirl."



Cheatin'?!?

"Shall I go and pick some flowers? Shall I go and catch some bees? Dauntless asks his King-father, John Barr.

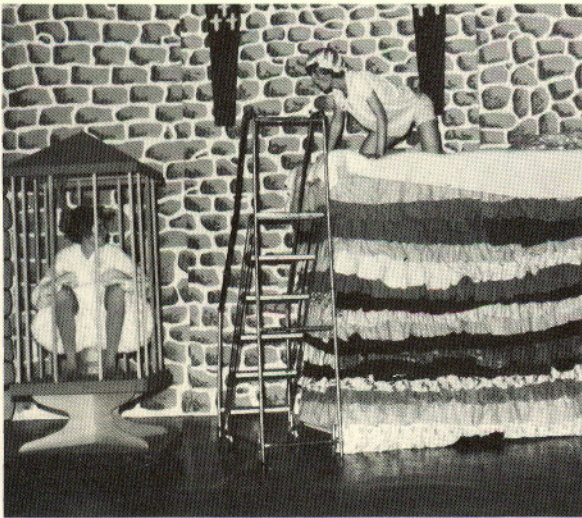
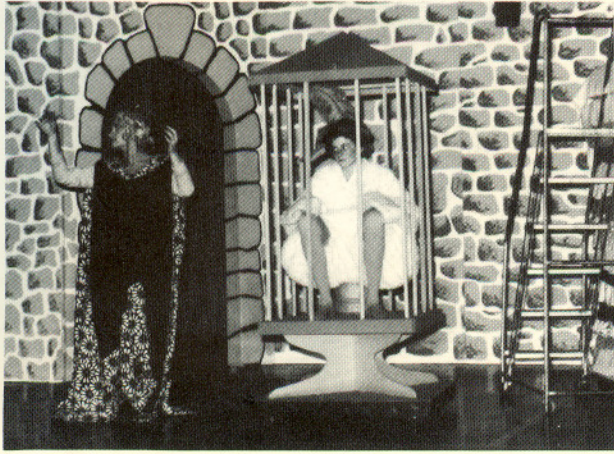




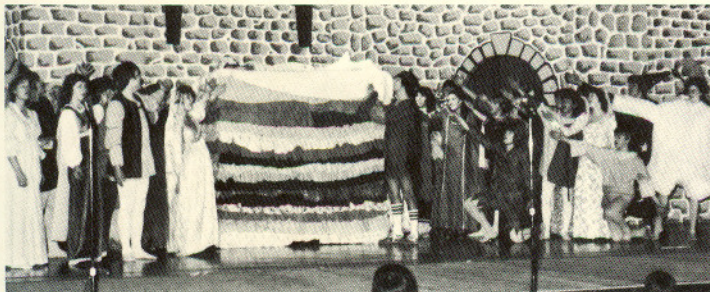
Queen
mother Karyl
Grube tells
son Daunt-
less that
someday
he'll have his
princess.

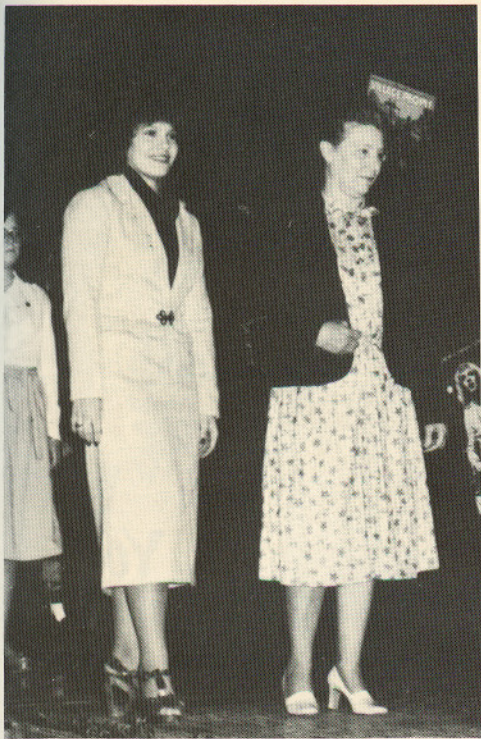


Ladies-in-waiting Melissa Roshon, Eliza-
beth Keller and Pat Murphy support
"Fred" while the Queen prepares her for
bed.

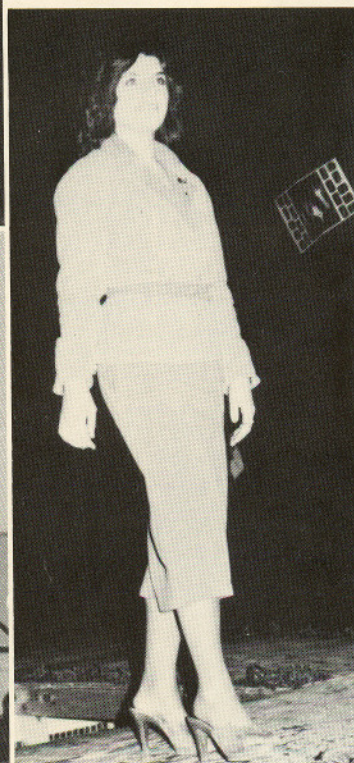


A Princess is a delicate thing, delicate and dainty as a dragon fly's wing. You can recognize a lady by her elegant air, but a genuine princess is exceedingly rare.

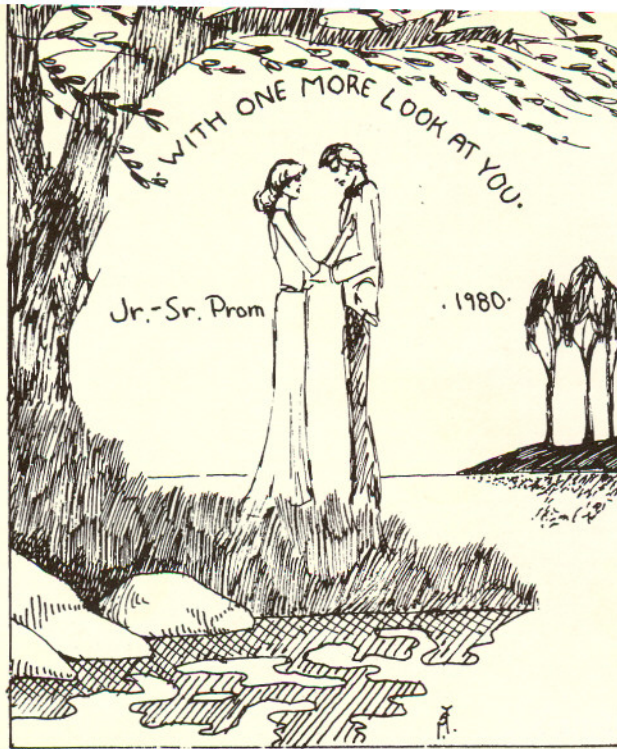




Style
Show



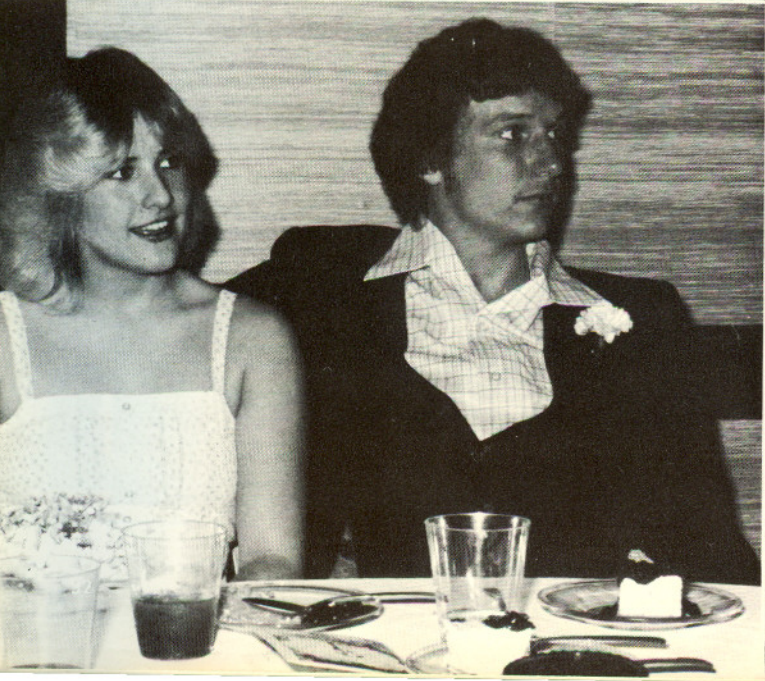
Jr.
Sr.
Prom



With
One
More
Look
At
You.

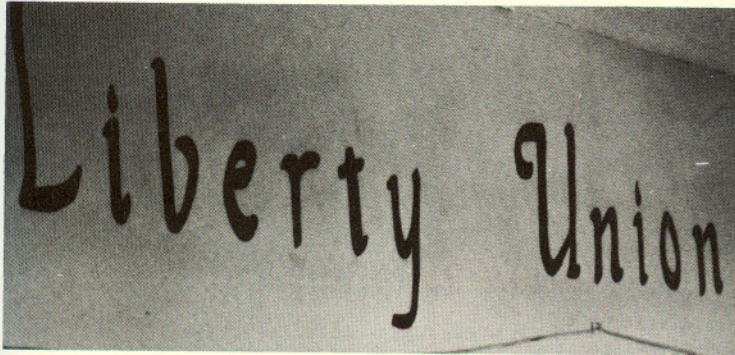
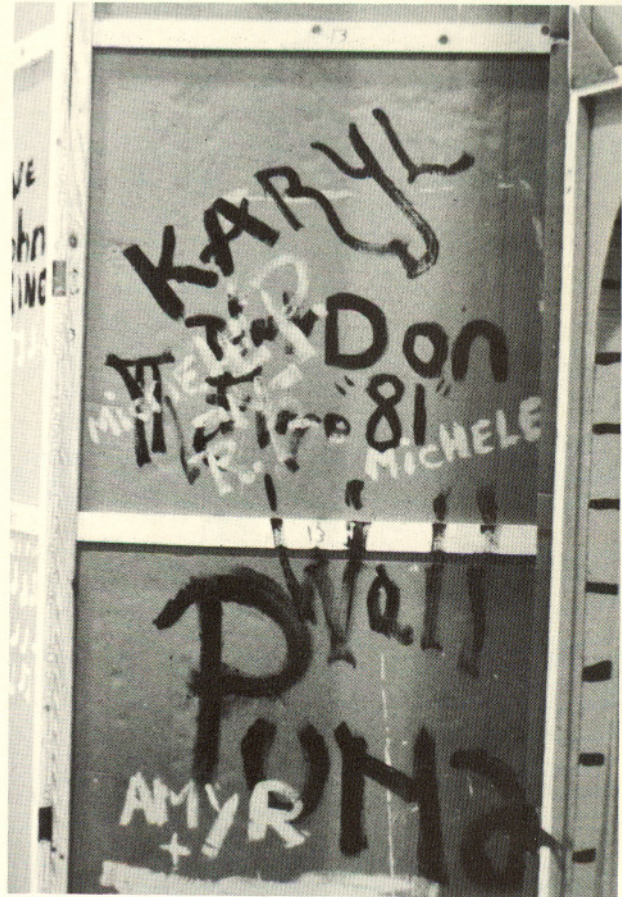
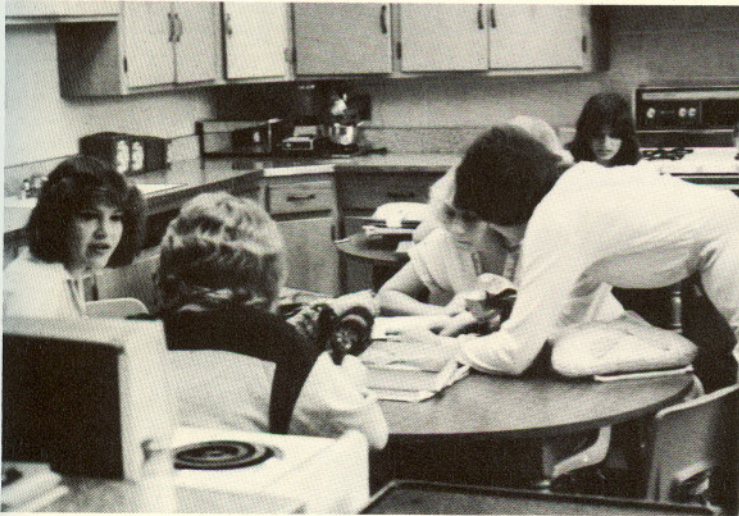
Prom Committee

Marsha Smith, Pete Thomas, Gina Bollinger, Steve Schaffner.
Seated: Wendy Wiley, Mr. Slayman, Leslie Orr, Joyce Grube,
Marc Taylor, Melissa Roshon, Scott Sorell.



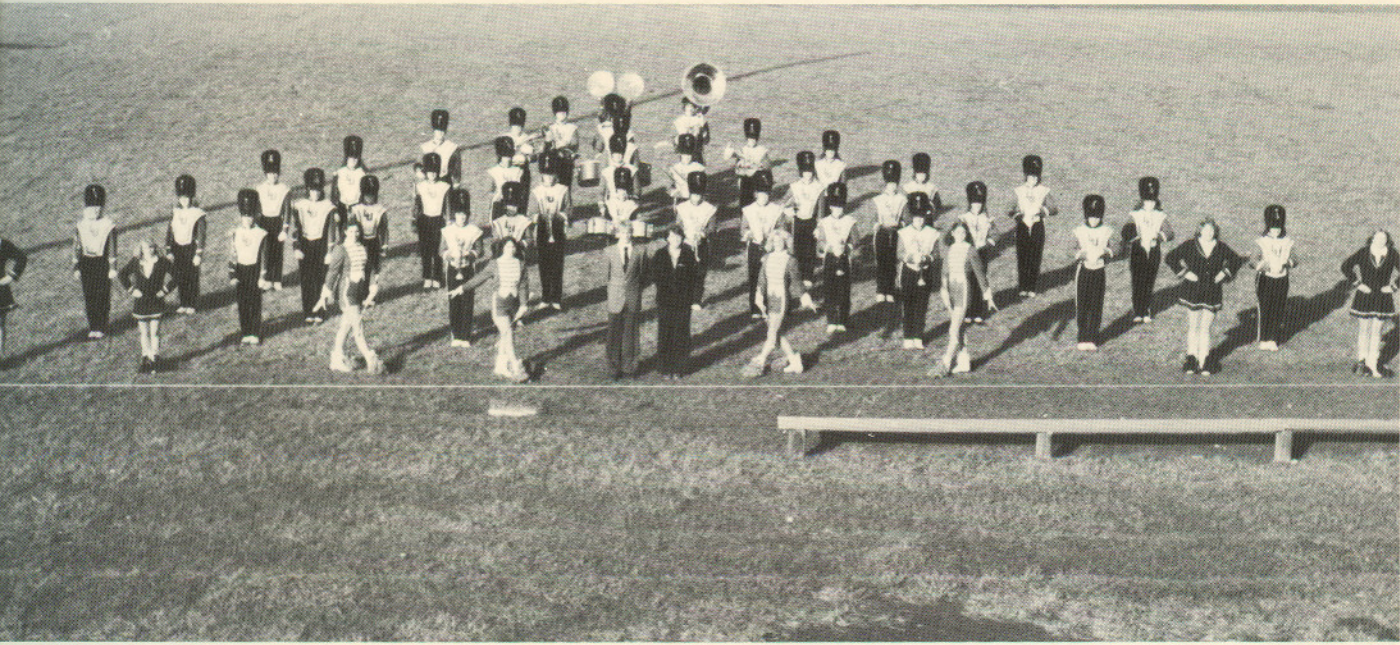






ORGANIZATIONS

The Marching Lions: Small but Strong



Flags Add Splashes of Color



Standing: Amy Pope, Patti Jolley, Betsy George, April Young, Anna May, Joyce Matson, Karen Blake, Theresa Keeling, Ann Saunders, Teri Eppley, Advisor: Miss Menghini

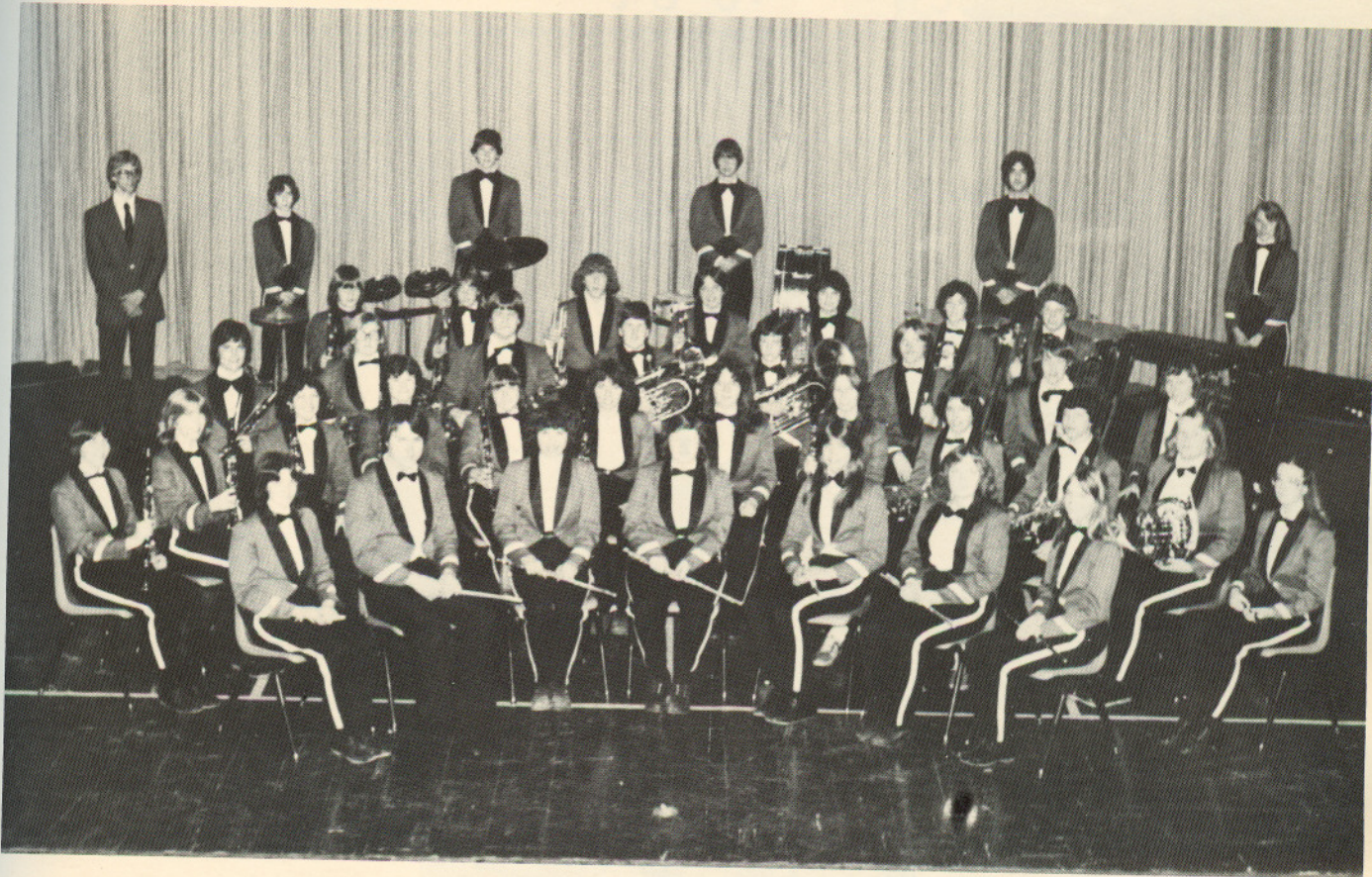
Majorettes: Flash & Fancy



Standing: Laurie Britton, Debbie Miller, Keeling, Sherry VanBibber, Kathy Birner, Advisor: Miss Menghini



Concert Band



Band Officers

First Row: Barry Whitt, Elizabeth Keller. Second Row: Nonon Mooney, Trudie Top, Andy Harman.



All-County Band

First Row: Scot Ashton, Nonon Mooney, Greg Coulter. Second Row: Elizabeth Keller, Connie Kenny, Sue Thomas. Third Row: Barry Whitt, Tia Raver, Marsha Smith.



"Senior" Band Members

First Row: Director — Mr. Matthews, Nonon Mooney, Barry Whitt, Jeff Watters, Mary Hutton, Stephanie Stoughton. Second Row: Tia Raver, Scot Ashton, Trudie Tope, Frank VanArsdale, Andy Harman.



Chorus — Enjoying Music Together



Chorus Officers



Back: Trudie Tope,
Paul Gassman, Mel-
issa Roshon. Front:
Marsha Smith, Brad
Whitt, Scott Ashton,
Jenell Gassman.

Ensemble



First Row: Joyce Grube, Delma Marcum, Betsy Fox. Second Row: Marla Fox, Jeff Watters, Scot Ashton, John Barr, Leslie Orr, Barry Whitt. Third Row: Melissa Roshon, Karyl Grube, Brad Whitt, Kelley Williams, Elizabeth Keller.



All-County Chorus

First Row: John Fuller, Paul Gassman, Jeff Watters, Brad Whitt, Denise Springer. Second Row: Suzanne Laver, Joyce Grube, Melissa Roshon, Steve Hall, Elizabeth Keller, Stephanie Stoughton. Third Row: Karyl Grube, John Barr, Tal Lohr, Mary Downard, Scot Ashton, Betsy George.

Senior Chorus Members

First Row: Karyl Grube, Kelley Williams, Jeff Watters, Kathi Mathias (above) Paul Gassman (sitting), Bev Stilwell, Scot Ashton, Tia Raver, Betsy Fox, John Barr. Upper Row: Stephanie Stoughton, Darla Ramey, Trudie Tope, Nonon Mooney.



French Club

First Row: Rhonda Judy, Vicki Beerman, Jenny Albanese. Second Row: Beth Richardson, Sue Thomas, Wendy Springer. Third Row: Jeff Rinehart, Mary Downard, Danette Powers, Advisor — Mr. Slayman.



Lion's Roar Staff

First Row: Jenell Gassman, Leslie Orr, Marsha Sims. Second Row: Kathy Bitner, Valerie Reeves, Sandy Bair, Tia Raver, Advisor — Mrs. Smith. Missing From Picture: Amy Pope.



Science Club

First Row: Lori Grover, Debbie Budnick, Robin Pierce. Second Row: Elizabeth Keller, Stephanie Stoughton, Valerie Mahel. Third Row: John Thomas, Rhonda Judy, John Lyons.



Fellowship of Christian Athletes



First Row: Sheryl Starcher, Mark Spitzer, Scott Nail, John Lyons, Scott Sorrell, Doug Gassman. Second Row: Pat Murphy, Allen Hieatt, Tim Hudson, Mona Smurr, Eddie Arledge. Third Row: Advisor — Mr. Craig, Dan West, Brian Martin, John Thomas, Kent Smurr, Dan King.

Future Secretaries



First Row: Lori Grover, Suzi Couch, Kristi Speaks, Marsha Sims, April Young, Julie Landis. Second Row: Lisa Mat hias, Tia Raver, Dodie Keller.

Student Secretaries



Row 1: Sherri VanBibber, Mary Hutton, Valerie Reeves, Debbie King, Carol Morehart. Row 2: Roman Hutton, Jenell Gassman, Jody Matson, Marla Fox, Ann Saunders, Darla Ramey, Julie Womax, Denise Upp, Sandra Barker. Row 3: Lori Grover, Suzy Couch, Bev Stiliwell, Betsy Fox, Marsha Sims, Elizabeth Keller, Melissa Roshon, Brenda Klinck, Cathi Mathias. Row 4: Becky Bachman, Kristi Speaks, Trudie Tope, Dodie Keller, Tia Raver, Mary Gates, Karyl Grube, Sandy Bair, Katrina Kocher.



Office Workers

1st Row: Carol Morehart, April Young, Julie Landis. 2nd Row: Sherrie VanBibber, Cathi Mathias, Sandy Barker, Jodi Matson, Darla Ramey. 3rd Row: Lori Grover, Valinda McCullough, Mona Smurr, Betsy Fox, Suzi Couch. 4th Row: Becky Bachman, Kristi Speaks, Lisa Mathias, Dodie Keller, Trudie Tope, Rhonda Turner, Cindy Bennett.

El Club de Español



First Row: Ramona Hutton, Mary Hutton, Nonon Mooney, Melissa Roshon, Cyndi Elliott, Advisor — Mrs. Smith. Second Row: Dee England, Trisha Buchanan, Cheri Thomas, Jenell Gassman, Ann Saunders, Debbie George, Barry Whitt, Lori Seifert, Jim Grover, Doug Gassman, Susan Wolfe, Brian Bibbler, Sheryl Starcher. Third Row: Lori Grover, Leann Ardrey, Jill Fritz, Mary Beth Gates, John Thomas, Amy Pope, Rhonda Turner, Brenda Peters, Mona Smurr.

Thespians are Dramatically Inclined



First Row: Advisor — Mrs. Lovejoy, Ken Mauger, Amy Pope, Trudie Tope, Scot Ashton, Elizabeth Keller, Melissa Roshon, Jeff Watters, Pete Thomas, Fritz Knapp. Second Row: Susan Thomas, Sam Lawrence, Valerie Reeves, Dan West, Mike George, Tia Raver, Bill Bailey, Cyndi Elliott, Scott Sorrell, Karen Blake. Third Row: Marla Fox, Bev Stilwell, Nonon Mooney, Betsy George, Kathy Bitner, Jenell Gassman, Darla Ramey, Debbie King. Fourth Row: Debbie George, Jill Romano, Susan Wolfe, Sherri VanBibber, Sheryl Starcher, Toni Eppley.

Honor Society



First Row: Advisor — Mr. Thrush, Mary Hutton, Trudie Tope, Paul Gassman, Carol Morehart, Lisa Schaffner, Nonon Mooney, Sandy Hughes, Sheryl Starcher. Second Row: Sandy Witherspoon, Melissa Roshon, Mona Smurr, Joyce Grube, Regina Bollinger, Elizabeth Keller, Karen Blake, Sherri Van Bibber. Third Row: Linda Furlough, Betsy Fox, Sandy Bair, Mary Beth Gates, Tia Raver, Amy Pope, Becky Bachman, Suzanne Couch. Fourth Row: Scott Sorrell, Don Daugherty, Mark Spitzer, Jeff Watters, Steve Schaffner, John Gates, Basil Coutant, Marc Taylor, Andy Harman, Barry Whitt.

Voice of the Students



First Row: Elizabeth Keller, Lori Grover, Karyl Grube, Holly Trusler, Jenell Gassman. Second Row: John Lyons, John Torrence, Regina Bollinger, Marsha Sims. Third Row: Mary Downard, Marc Taylor, Tal Lohr, Pete Thomas, Amy Pope.

Those Creative Minds!



Front Row: Cheri Evans, Betsy George, Rhonda Turner, Doug Jenkins, Becky Bachman, Trish Vanardsdalen, Mike Saunders. 2nd Row: Trish Buchanan, Tia Raver, Deanna Wooster, Vicki Beerman, Susan Mathias. Advisor: Mrs. Bayless.



Future Homemakers of America



1. Home Economics I and II Super Sizzling Homemakers.
2. Home Economics II PIG's Inc. (Pretty Intelligent Gals).
3. Home Economics III Sew and So's.
4. Home Economics III and IV Guiding Lights.

The Liberty Union Chapter of the FHA has been involved in many activities during the '79-'80 school year. The girls sponsored many annual events such as the fall walk-a-thon for Children's Hospital, the Holly Dance, the FHA Banquet, and a farewell for the senior members. Many girls attended the Fall District Meeting and State Convention. The girls gave two style shows during the year and served several banquets for other organizations. They went on field trips also. They celebrated FHA-HERO week in February by supporting the March of Dimes and holding fun-filled events during the school days.



Future Farmers of America

The FFA members have been very active during the 1979-1980 school year. Both the Senior and Junior Parliamentary Procedure teams received silver ratings during the year. Three members received silver ratings at a public speaking contest. Marc Taylor prepared a speech, Jim Mattox gave an extemporaneous speech, and Jim Reinheld spoke about the FFA Creed. The members also involved themselves in such annual events as the Ohio State FFA Convention and the fruit sale.



First Row: Marc Taylor, Dave Weidner, John Gates, Craig Leitnaker, John Price, Barry Whitt. Second Row: Doug Shell, Stanley Young, Holly Trusler, Crystal Boucher, Jackie Solliday, Susan King. Third Row: Don Keller, Benny Hedges, Burton Hobson, John Pack, Ben Turley, Lee Housley. Fourth Row: Matt Taylor, Steve Ford, Kim Rardain, Steve Shell, Sheryl Sorrell. Fifth Row: Vernon Snider, John Fultz, Mike Manson, Scott Carpenter, Gil Grey, Jim Reinheld, Mike Klein, J. Updegrave, Charles Guisinger. Sixth Row: Jim Addison, Mike George, Tim Springer, David Keller, Jim Bennett, Mike Taylor, Greg Kull, Fritz Knapp, David Evans.

Officers



News Reporter — Marc Taylor, Vice President — Dave Weidner, President — John Gates, Treasurer — Craig Leitnaker, Sentinel — John Price, Secretary — Barry Whitt.

Special Awards



John Gates, as well as being president of the Liberty Union Chapter of the FFA, was the only member to receive the award of State Farmer this year. Doug Shell participated in the State Livestock Judging Contest.